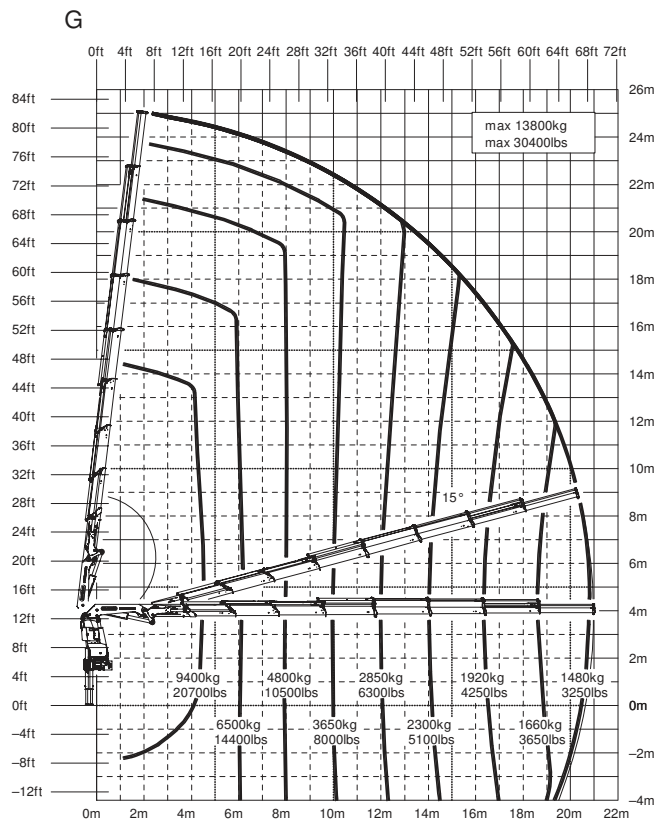
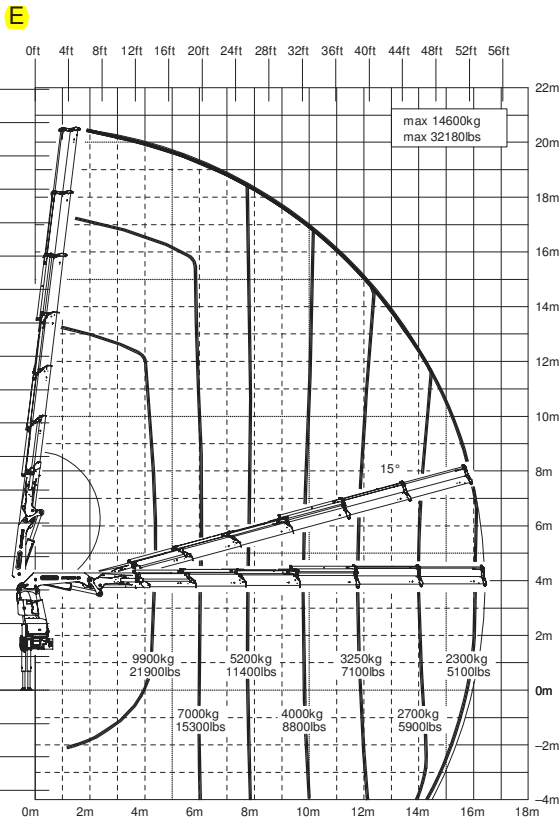
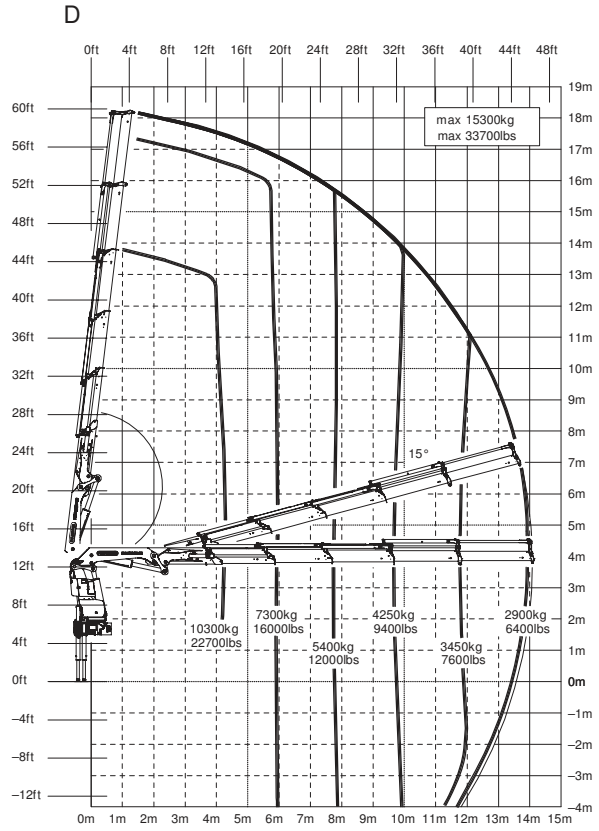
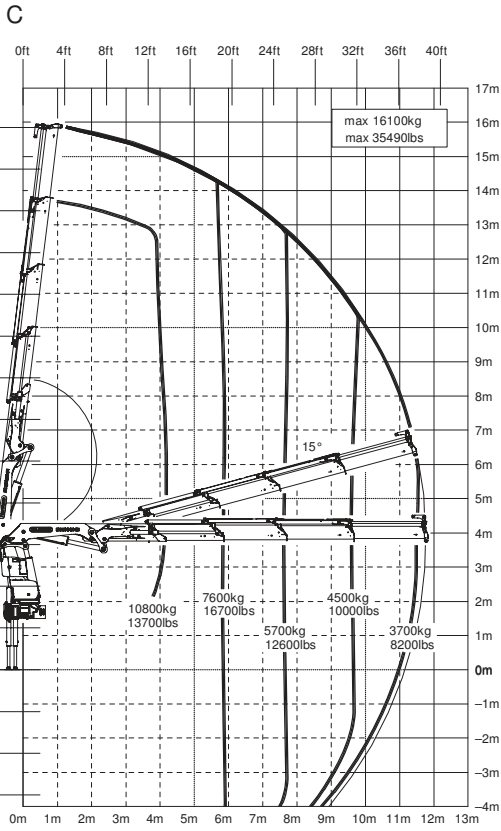


Pinpoint accuracy and oscillation-free due to AOS



High payload combined with enormous outreach

A

Lifting capacities			
max.		16800 kg	37030 lbs
4.1 m	13' 5"	11300 kg	24900 lbs
5.8 m	19' 0"	8100 kg	17900 lbs
7.6 m	24' 11"	6200 kg	13700 lbs

B

Lifting capacities			
max.		16400 kg	36150 lbs
4.2 m	13' 9"	1100 kg	11000 lbs
5.8 m	19' 0"	7900 kg	7900 lbs
7.6 m	24' 11"	6000 kg	6000 lbs
9.6 m	31' 6"	4750 kg	4750 lbs

C

Lifting capacities			
max.		16100 kg	35490 lbs
4.2 m	13' 9"	10800 kg	13700 lbs
5.8 m	19' 0"	7600 kg	16700 lbs
7.6 m	24' 11"	5700 kg	12600 lbs
9.6 m	31' 6"	4500 kg	10000 lbs
11.6 m	38' 1"	3700 kg	8200 lbs

D

Lifting capacities			
max.		15300 kg	33700 lbs
4.3 m	14' 1"	10300 kg	22700 lbs
6.0 m	19' 8"	7300 kg	16000 lbs
7.8 m	25' 7"	5400 kg	12000 lbs
9.7 m	31' 10"	4250 kg	9400 lbs
11.7 m	38' 5"	3450 kg	7600 lbs
13.9 m	45' 7"	2900 kg	6400 lbs

E

Lifting capacities			
max.		14600 kg	32180 lbs
4.4 m	14' 5"	9900 kg	21900 lbs
6.1 m	20' 0"	7000 kg	15300 lbs
7.9 m	25' 11"	5200 kg	11400 lbs
9.8 m	32' 2"	4000 kg	8800 lbs
11.8 m	38' 9"	3250 kg	7100 lbs
14.0 m	45' 11"	2700 kg	5900 lbs
16.2 m	53' 2"	2300 kg	5100 lbs

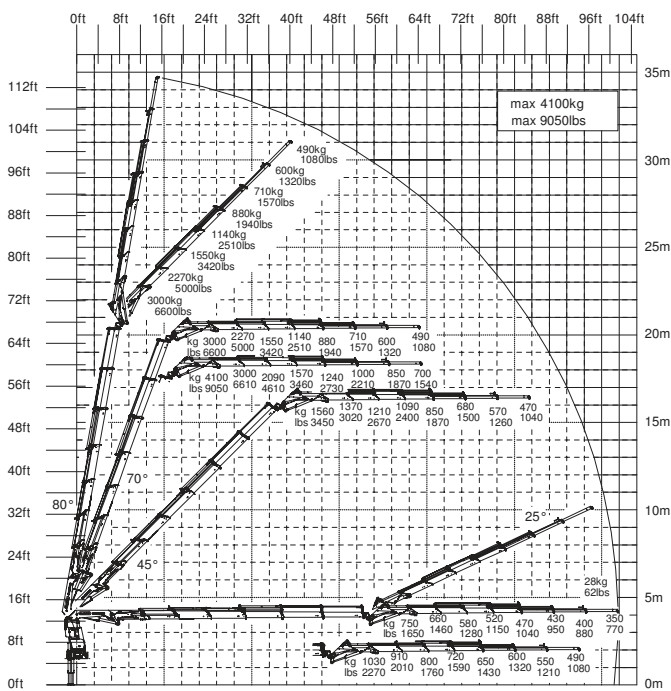
F

Lifting capacities			
max.		14000 kg	30860 lbs
4.5 m	14' 9"	9600 kg	21100 lbs
6.2 m	20' 4"	6700 kg	14800 lbs
8.0 m	26' 3"	5000 kg	10900 lbs
9.9 m	32' 6"	3800 kg	8400 lbs
11.9 m	39' 1"	3050 kg	6700 lbs
14.1 m	46' 3"	2500 kg	5500 lbs
16.4 m	53' 10"	2100 kg	4600 lbs
18.6 m	61' 0"	1840 kg	4050 lbs

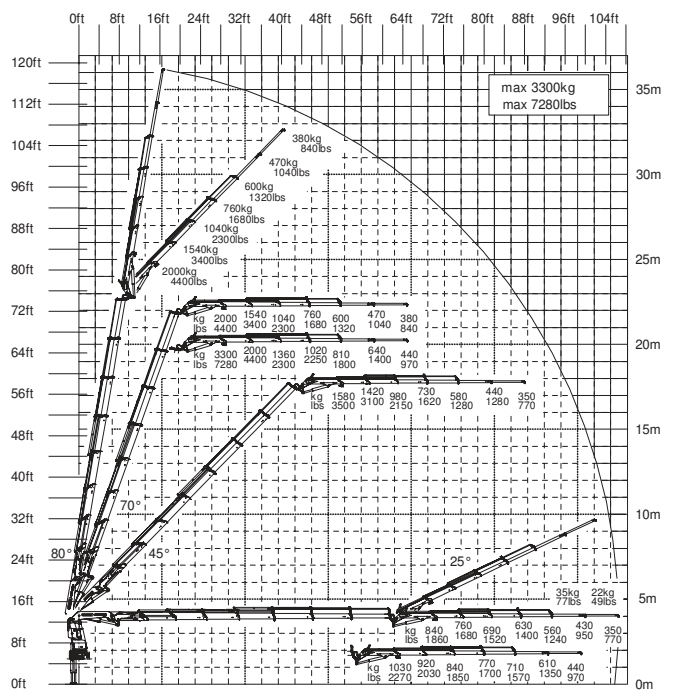
G

Lifting capacities			
max.		13800 kg	30400 lbs
4.5 m	14' 9"	9400 kg	20700 lbs
6.2 m	20' 4"	6500 kg	14400 lbs
8.0 m	26' 3"	4800 kg	10500 lbs
9.9 m	32' 6"	3650 kg	8000 lbs
12.0 m	39' 4"	2850 kg	6300 lbs
14.2 m	46' 7"	2300 kg	51000 lbs
16.4 m	53' 10"	1920 kg	4250 lbs
18.6 m	61' 0"	1660 kg	3650 lbs
20.8 m	68' 3"	1480 kg	3250 lbs
23.0 m	75' 6"	900 kg	1980 lbs
25.0 m	82' 0"	600 kg	1320 lbs

E PJ125E JV1 DPS PLUS



F PJ080C JV2 DPS PLUS



The outreaches stated are with a boom angle of 20° and are therefore not the maximum.

* mechanical extension