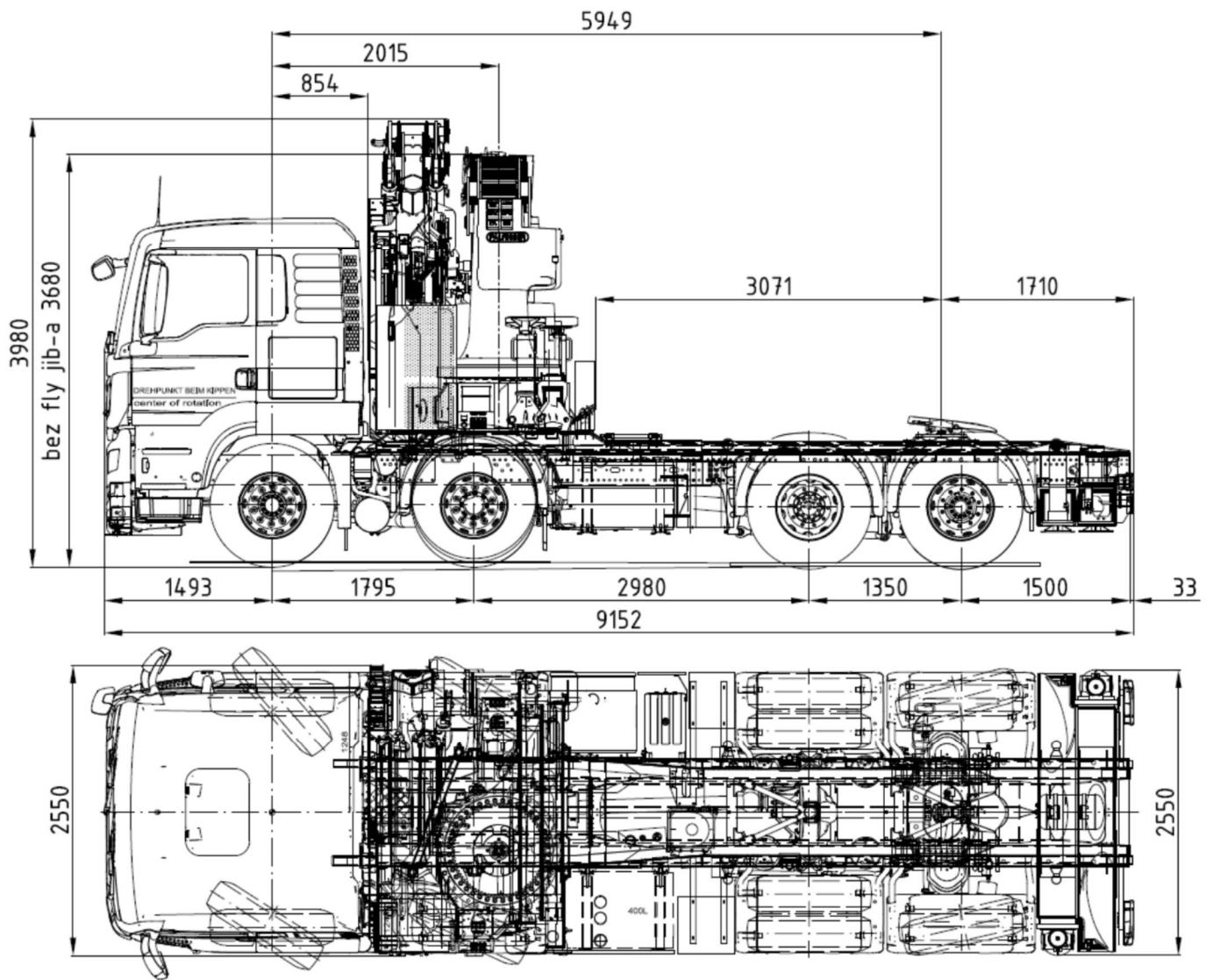


## TEHNIČKI PODACI NADOGRADNJE

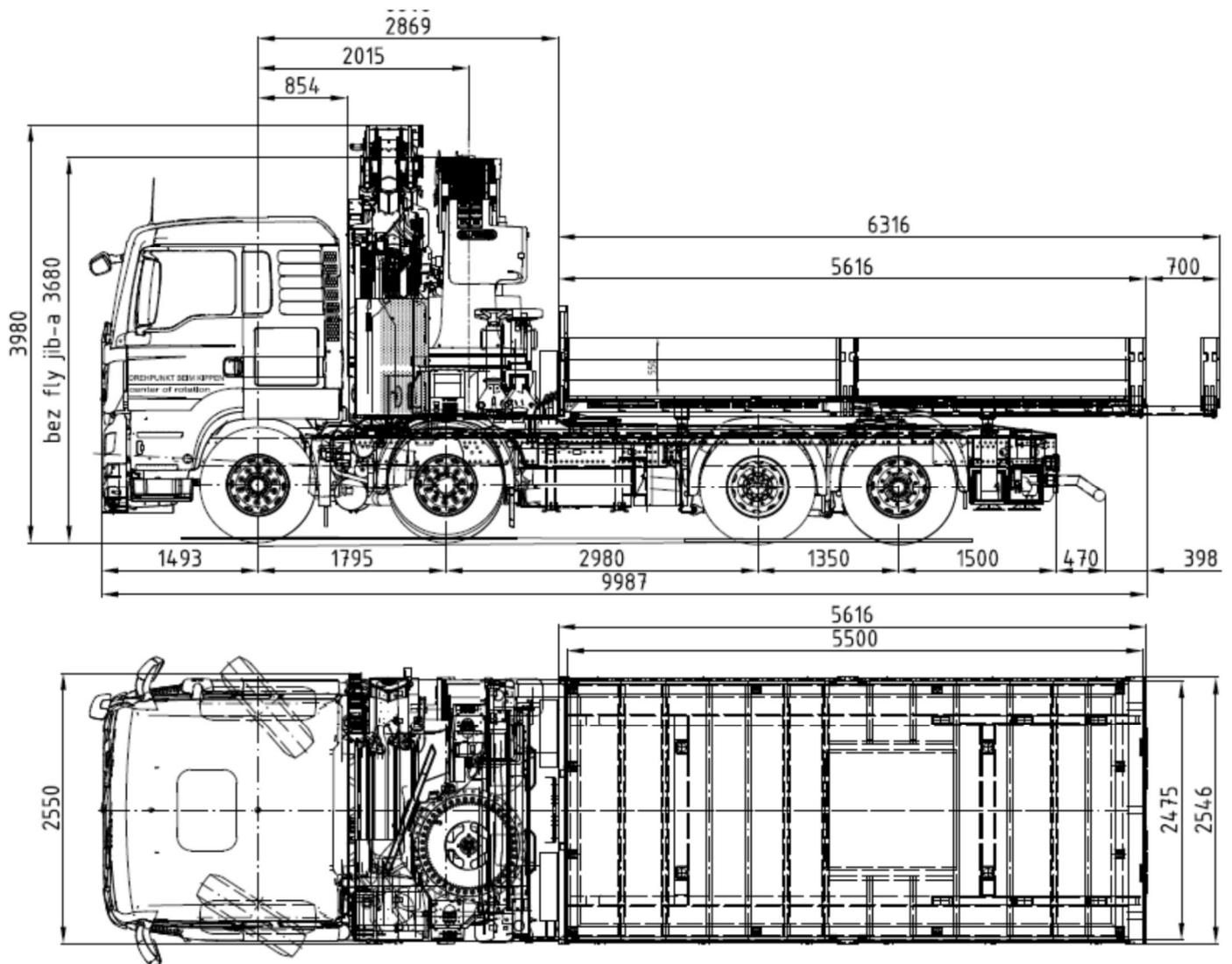
DIZALICA PK 92002-SH F + TOVARNI SANDUK + POLUPRIKOLICA



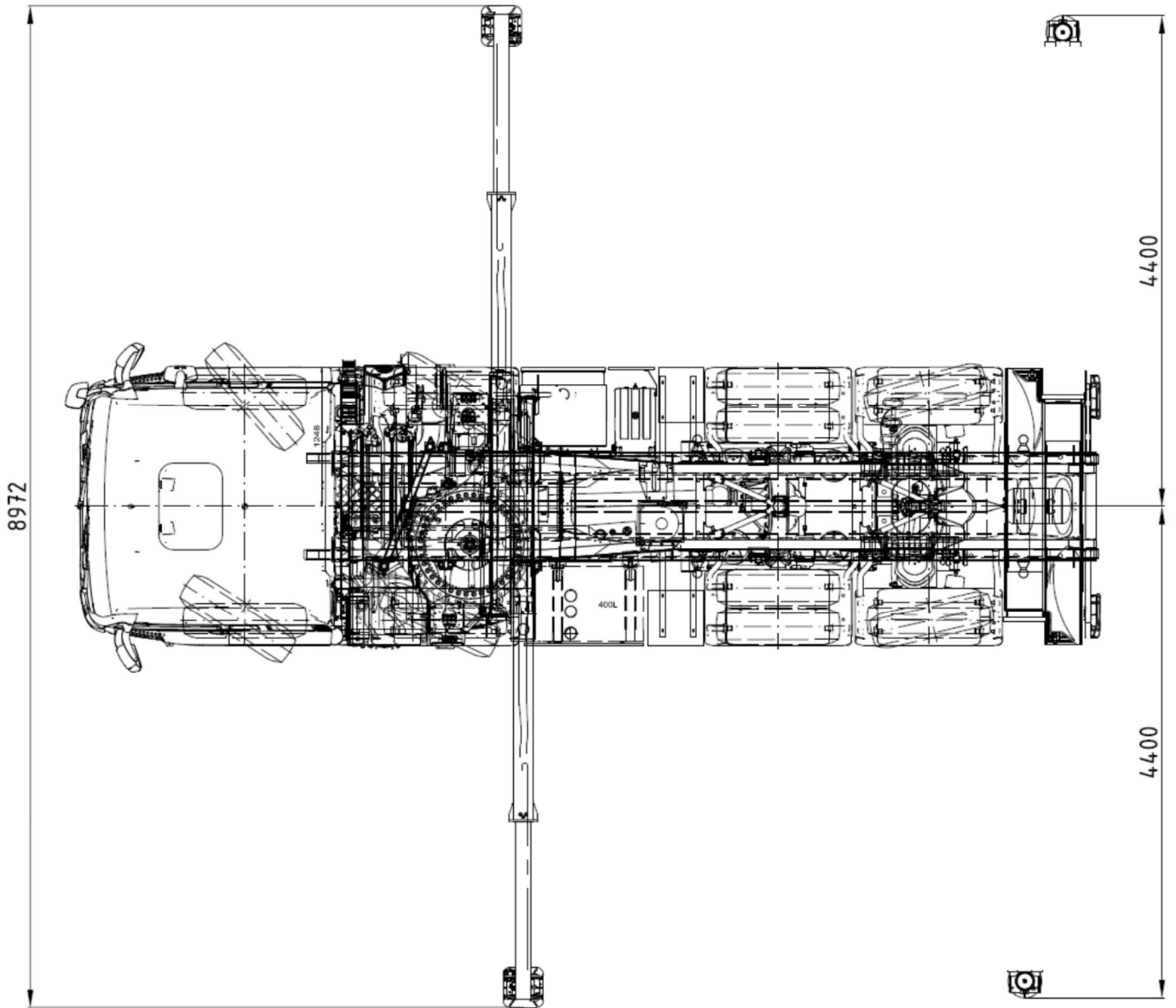
**MAN TGS 35.480 BEZ SANDUKA**



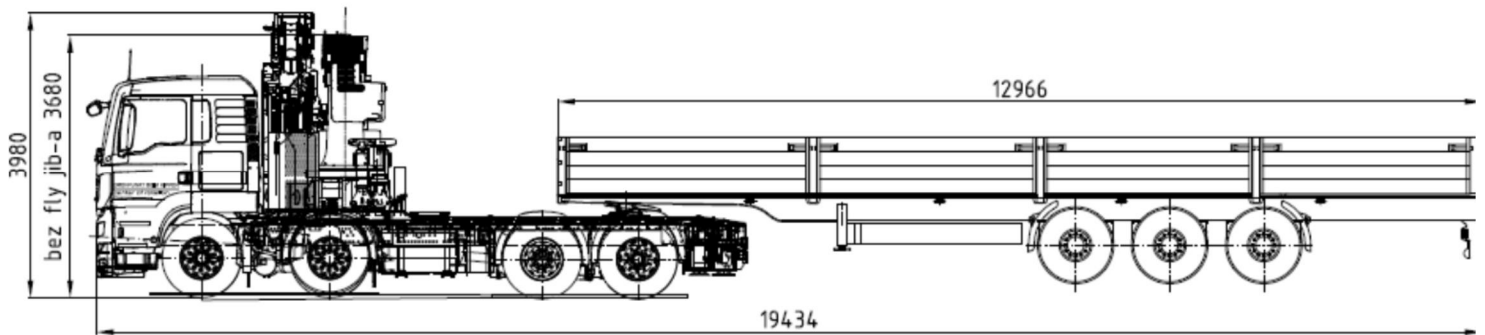
**MAN TGS 35.480 SA SANDUKOM**



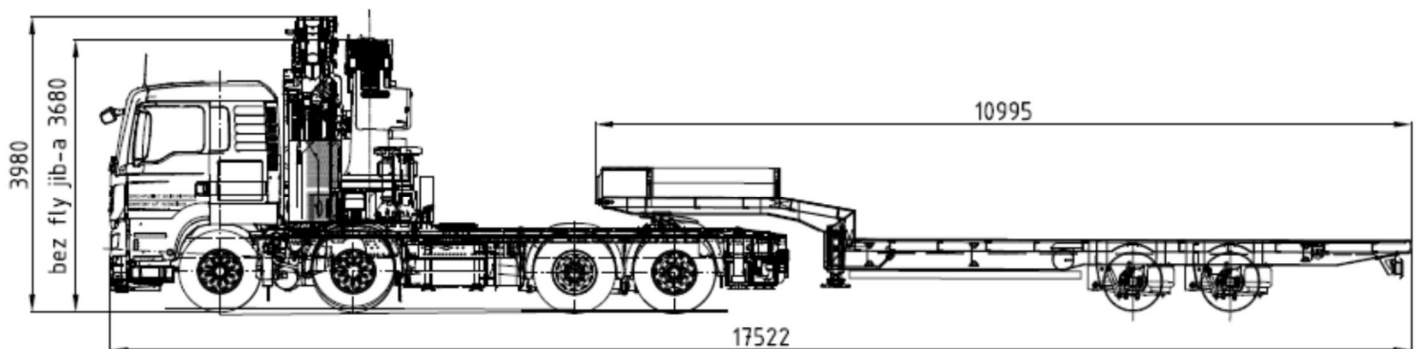
**GABARITI STABILIZATORA**



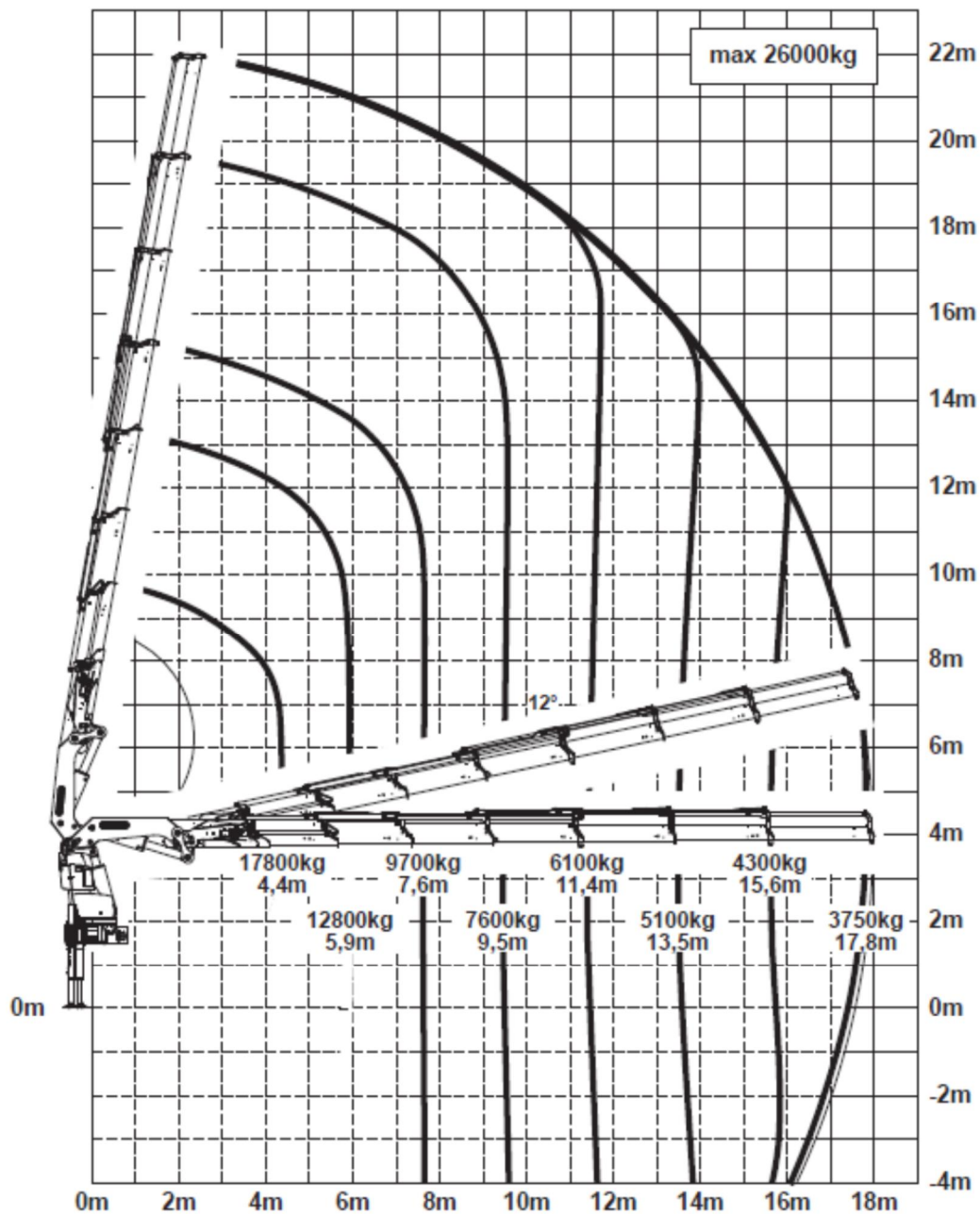
**MAN TGS 35.480 SA KRONE POLUPRIKOLICOM**



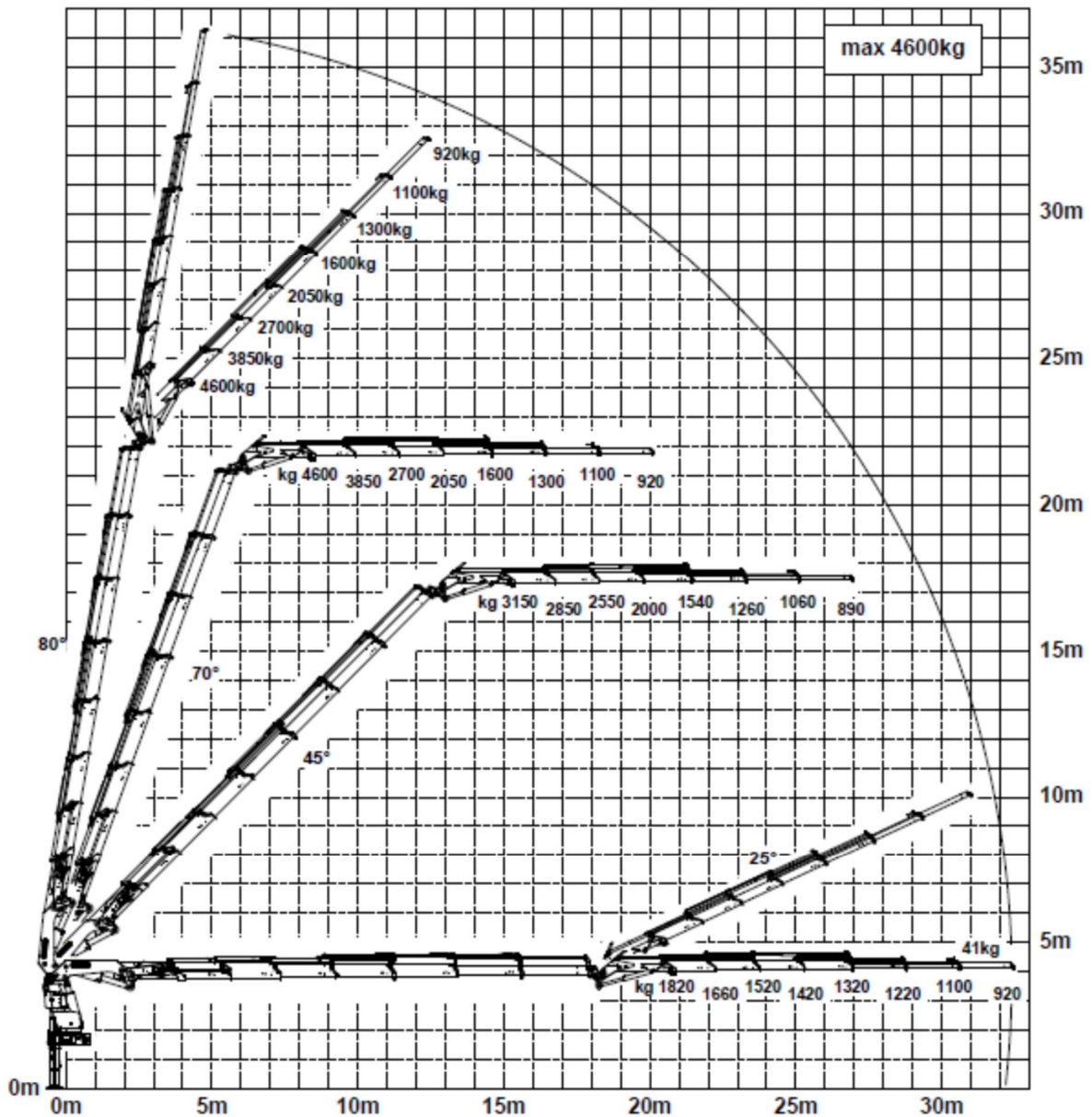
**MAN TGS 35.480 SA PK POLUPRIKOLICOM**



**PALFINGER PK 92002-SH F**



**PALFINGER PK 92002-SH F + FLY-JIB PJ 170 E**



## OSOVINSKA OPTEREĆENJA

	I	II	III	IV	UKUPNO
Dopušteno	9000	9000	11500	7500	32000
Izvagano	7790	7790	6730	4390	26700
Teret	-385	-385	3674	2396	5300
Ukupno	7405	7405	10405	6785	32000

Proračun osovinskih opterećenja vozila sa sandukom i fly-jibom

	I	II	III	IV	UKUPNO
Dopušteno	9000	9000	11500	7500	32000
Izvagano	7490	7490	5490	3580	24050
Teret	-577.5	-577.5	5511	3594	7950
Ukupno	6912.5	6912.5	11000	7175	32000

Proračun osovinskih opterećenja vozila bez sanduka i fly-jiba

